

Three 2016 Airbus A321-211 Aircraft



AIRCRAFT IDENTIFICATION

| | |
|--------------------------------|---------------------------------|
| Aircraft Type: | Airbus A321-211 |
| Engine Model: | CFM56-5B3/3 PIP |
| Year of Manufacturer: | MAY-JUN-AUG 2016 |
| Noise Abatement Compliance: | Stage 4, ICAO Annex 16 Volume 1 |
| Interior Arrangement: | Y212 |
| In Flight Entertainment (IFE): | None |
| Lavatory: | 3 x LA, LD, LE |
| Galleys: | 2 x G1, G2A, G5 |
| Sharklets: | Yes |

WEIGHTS, OPERATIONAL

European

| | |
|----------------------------------|----------------------------|
| Maximum Take Off Weight (MTOW): | 89' 000 (kg) (93' 000 kg)* |
| Maximum Landing Weight (MLW): | 77' 800 (kg) |
| Maximum Zero Fuel Weight (MZFW): | 73' 800 (kg) |
| Additional Fuel Centre Tank: | No |
| Weight Variant: | 002 |

* Increased MTOW at additional cost

AIRFRAME STATUS

| | |
|------------------------|--------|
| Total Airframe Hours: | 00:00* |
| Total Airframe Cycles: | 0* |
| Status Date: | 2016 |

* Expect about 10 FH and 5 FC at delivery from AIRBUS

MAINTENANCE STATUS

The Operators approved Maintenance Program is conforming to Manufacturer`s MPD.

| | | |
|------------------------------|-----------------|--|
| Base | Check interval: | 7500 FH, 5000 FC, 24 Month (whichever comes first) |
| Line | Check interval: | 750 FH, 750 FC, 121 Days (whichever comes first) |
| Last Base Check performed: | | None |
| Next Base Maintenance Check: | | None |

| ENGINE / APU DETAILS | Engine 1 | Engine 2 | APU |
|----------------------|-----------------|-----------------|-------------|
| Manufacturer: | CFMI | CFMI | Honeywell |
| Model: | CFM56-5B3/3 PIP | CFM56-5B3/3 PIP | GTCP 131-9A |

| ENGINE / APU STATUS | Engine 1 | Engine 2 | APU |
|-------------------------------|-------------|-------------|-------|
| Thrust Rate: | 33' 000 Lbs | 33' 000 Lbs | / |
| Total Time Since New: | 00:00* | 00:00* | TBA |
| Total Cycles Since New: | 0* | 0* | TBA |
| Last Performance Restoration: | None | None | None |
| Last Overhaul: | None | None | None |
| Hours Since Last Shop Visit: | 00:00 | 00:00 | 00:00 |
| Cycles Since Last Shop Visit: | 0 | 0 | 0 |
| First Limiter: | TBA | TBA | TBA |
| Status Date: | 2016 | 2016 | 2016 |

* Expect about 10 FH and 5 FC at delivery from AIRBUS

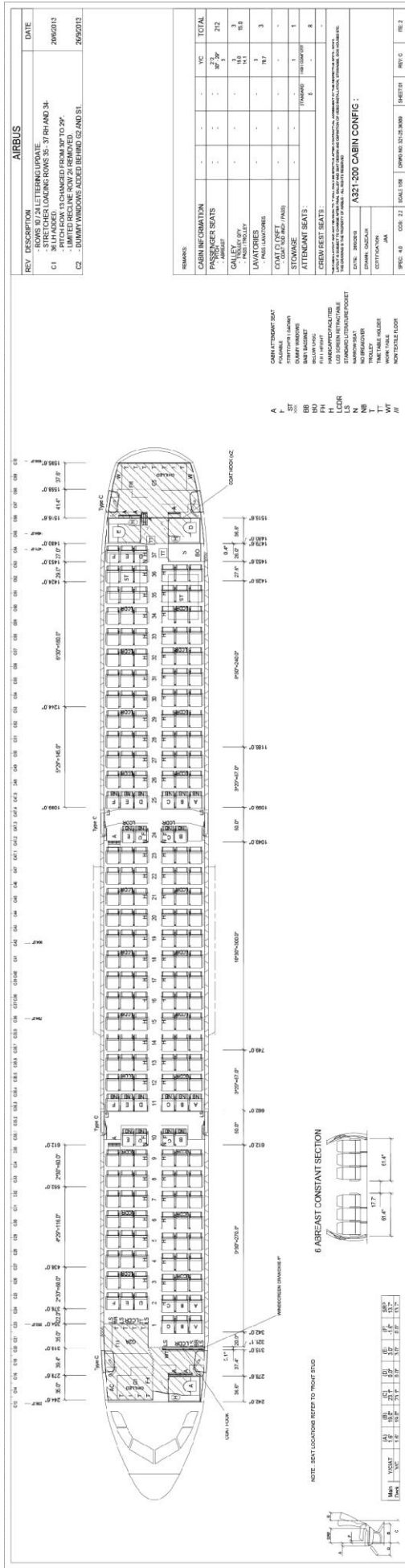
| LANDING GEARS | NLG | LH MLG | RH MLG |
|------------------------|---------------------------|---------------------------|---------------------------|
| Manufacturer: | MESSIER – DOWTY | | |
| Part Number: | TBA | TBA | TBA |
| Position: | NLG | LH MLG | RH MLG |
| Hours Since New: | 00:00 | 00:00 | 00:00 |
| Cycles Since New: | 0 | 0 | 0 |
| Last Overhaul Date: | None | None | None |
| Cycles Since Overhaul: | 0 | 0 | 0 |
| Status Date: | 2016 | 2016 | 2016 |
| Overhaul Interval: | 20`000 CYC or 10 Years | 20`000 CYC or 10 Years | 20`000 CYC or 10 Years |

| INTERIOR | | | |
|--|-----|--------------|-----------------|
| Description | QTY | Manufacturer | Part Number |
| ATA 25 - Equipment & Furnishing | | | |
| Seats Tourist: | 212 | RECARO | 3520D955-31-XXX |
| Galley G1: | 1 | BUCHER | 1391000 |
| Galley G2A: | 1 | BUCHER | 1392000-100 |
| Galley G5: | 1 | BUCHER | 1395000-100 |

MAJOR AVIONICS EQUIPMENT

| | | |
|-------|-------------------------------|---|
| 23-00 | Communications | HF: Single system VHF: Three systems VDL Mode 2 ACARS – FANS B+ compliant ELT: 1 Fixed ELT installed, 1 portable |
| 25-10 | Flight Compartment | Two pilots and one observer |
| 25-20 | Interior Configuration | Seating: 212 E/C (Recaro Aircraft Seating Division) Attendants: 8 attendants Galleys: G1, G2, G5 (Bucher) |
| 34-00 | Navigation | Flight Management Computer Dual system TCAS T3CAS - ACSS |
| 44-20 | In Flight Entertainment (IFE) | Panasonic MPES Server based system with |
| 46-21 | Information Systems | FANS B+ |

* See SCN / BFE List



RFC / SNC LISTING

| <i>ATA</i> | <i>RFC</i> | <i>RFC Title</i> | <i>Last SCN issue</i> | <i>EPAC/TDU</i> |
|------------|-------------|--|-----------------------|-----------------|
| 7200 | 72E001C | CFMI ENGINES - CFM56-5B3/3 (SAC - TECH INSERTION - PIP) AT 33 000 LBF NOMINAL THRUST (A321-211) | 72E0012113S1C | CN72.00.121 13 |
| 7113 | 71E001C | FAN COWL LATCHES COLOUR CHANGE TO YELLOW FLUORESCENT | 71E1305502S1C | CN71.13.055 02 |
| 5710 | 57E001C | INSTALLATION OF SHARKLETS LARGE WINGTIP DEVICES | 57E1020001S1C | CN57.10.200 01 |
| 5610 | 56E1010233C | ALTERNATE LATERAL WINDOWS - PPG | 56E1010233S1C | CN56.10.102 33 |
| 5610 | 56E001C | ALTERNATE FRONT WINDOWS - PPG | 56E1010228S1C | CN56.10.102 28 |
| 5530 | 55E3010101C | INSTALLATION OF EROSION PROTECTION ON VERTICAL STABILIZER LEADING EDGE - STAINLESS STEEL | 55E3010101S1C | CN55.30.101 01 |
| 5251 | 52E5110603C | INSTALLATION OF DEADBOLT ON REINFORCED COCKPIT DOOR | 52E5110603S1C | CN52.51.106 03 |
| 5122 | 51E007C | ALTERNATE PAINT SYSTEM (CF PRIMER) ON VERTICAL STABILIZER - PPG | 51E2241011S1C | CN51.22.410 11 |
| 5122 | 51E006C | ALTERNATE PAINT SYSTEMS (CF PRIMER) ON NACELLES - PPG AEROSPACE | 51E2221502S1C | CN51.22.215 02 |
| 5122 | 51E005C | PPG (CF PRIMER, STRIPPABLE) ON FUSELAGE | 51E2271007S2C | CN51.22.710 07 |
| 5112 | 51E001C | THRUST REVERSER PAINTING IN YELLOW (CFM ENGINES) | 51E1211203S1C | CN51.12.112 03 |
| 5100 | 51E0011502C | APPLICATION OF TYPE III CORROSION INHIBITOR (CI) & WATER REPELLENT FLUID (WRF) ON ADDITIONAL AREAS | 51E0011502S1C | CN51.00.115 02 |
| 4900 | 49E001C | APU ALTERNATE EQUIPMENT - HONEYWELL, GTCP131-9A | 49E0010518S1C | CN49.00.105 18 |
| 4621 | 46E2114204C | INSTALLATION OF FANS B+ WITH DATALINK RECORDING CAPABILITY | 46E2114204S1C | CN46.21.142 04 |
| 4621 | 46E2110213C | AIRBUS STANDARD AOC SOFTWARE FROM ROCKWELL COLLINS WITH UNITS IN KG (BY DEFAULT) | 46E2110213S1C | CN46.21.102 13 |
| 3520 | 35E2001001C | INSTALLATION OF FOUR OXYGEN MASKS PER BOX | 35E2001001S1C | CN35.20.010 01 |

| | | | | |
|------|-------------|--|---------------|----------------|
| 3511 | 35E1120102C | COCKPIT OXYGEN CYLINDER ALTERNATE EQUIPMENT 115 CU FT (STEEL)-EROS | 35E1120102S1C | CN35.11.201 02 |
| 3532 | 5E003C | B/E AEROSPACE SYSTEMS CABIN PBE CHANGE FROM PN E28180-10 TO E28180-20- 0001 | 35E3212051S1C | CN35.32.120 51 |
| 3520 | 35E002C | SUPPLIER CHANGE OF 15 MIN CHEMICAL OXYGEN SYSTEM FROM DRAEGER TO DAE SYSTEMS | 35E2010702S1C | CN35.20.107 02 |
| 3520 | 35E001C | PASSENGER OXYGEN ALTERNATE SYSTEM (15 MIN) - DRAEGER | 35E2010002S1C | CN35.20.100 02 |
| 3458 | 34E5831313C | MMR ALTERNATE EQUIPMENT PROVIDING ILS (FM IMMUNITY) AND GPS C1 FUNCTIONS - THALES AVIONICS | 34E5831313S1C | CN34.58.313 13 |
| 3452 | 34E5213301C | COMPLIANCE WITH EUROPEAN ENHANCED SURVEILLANCE (EHS) REGULATION | 34E5213301S1C | CN34.52.133 01 |
| 3443 | 34E4328003C | INSTALLATION OF T3CAS STD 1.2 - ACSS (-10202)/ ATC D0260A - ACSS (-10100) | 34E4328003S1C | CN34.43.280 03 |
| 3420 | 34E2020304C | ISIS OPTIONAL FUNCTION - ALTITUDE IN METER | 34E2020304S1C | CN34.20.203 04 |
| 3441 | 34E004C | SINGLE WXR (ARINC 708A) WITH PWS AND MULTISCAN (WXR 2100) - ROCKWELL COLLINS, PN -214 | 34E4130013S1C | CN34.41.300 13 |
| 3443 | 34E001C | WIRING PROVISION FOR T3CAS | 34E4327001S1C | CN34.43.270 01 |
| 3350 | 33E5011070C | INSTALL. OF FLOOR- MOUNTED EEPMS LUFTHANSA TECHNIK - 900 (WITH CLIP COVER)/EXIT IDENTIFIER - LSI (LED) | 33E5011070S1C | CN33.50.110 70 |
| 3321 | 33E004C | INSTALLATION OF WHITE LED LIGHTING IN CABIN | 33E2120001S1C | CN33.21.200 01 |
| 3340 | 33E003C | INSTALLATION OF ALTERNATE LED RTO, TAXI AND LOGO LIGHTS | 33E4010304S1C | CN33.40.103 04 |
| 3350 | 33E002C | INSTALLATION OF SILVER GREY FILTER ON FLOOR- MOUNTED EEPMS LUFTHANSA TECHNIK - 900 - CARPET AREA | 33E5011509S1C | CN33.50.115 09 |
| 3248 | 32E4820014C | INSTALLATION OF UNIVERSAL BRAKE COOLING FANS ON MESSIER/BF-GOODRICH | 32E4820014S1C | CN32.48.200 14 |

| | | | | |
|------|-------------|--|----------------|----------------|
| | | WHEELS AND BRAKES | | |
| 3241 | 32E4112012C | MLG TIRES SELECTION - BRIDGESTONE (30X8.8-R15 RADIAL TIRES) | 32E4112012S1C | CN32.41.120 12 |
| 3241 | 32E4111128C | MLG TIRES ALTERNATE EQUIPMENT BRIDGESTONE (1270X455- R22/32 RADIAL TIRES) | 32E4111128S1C | CN32.41.111 28 |
| 3240 | 32E001C | WHEELS AND BRAKES ALTERNATE EQUIPMENT - MESSIER/BF GOODRICH - PN C20534100 | 32E4011331S1C | CN32.40.113 31 |
| 3165 | 31E6510001C | ACTIVATION OF MORA ON ND | 31E6510001S1C | CN31.65.100 01 |
| 3160 | 31E6011401C | INDICATION OF METRIC ALTITUDE ON PFD | 31E6011401S1C | CN31.60.114 01 |
| 3133 | 31E005C | WGL-QAR (2 HSPA+ MODULES) EQUIPPED WITH 8 GB CF MEMORY CARD - TELEDYNE (BFE) (ARINC 591/600) | 31E3313247S1C | CN31.33.132 47 |
| 3133 | 31E004C | WEFA READY FDIMU ED48A200WR - FDIU S/W (- 050), DMU S/W (-055) FOR CFM- SAGEM | 31E3305501S1C | CN31.33.055 01 |
| 3138 | 31E003C | INSTALLATION OF PROVISION FOR MDDU / PDL ON COCKPIT PEDESTAL (ARINC 615-3) | 31E3810201S2C | CN31.38.102 01 |
| 3136 | 31E001C | FULL PROVISION FOR DIGITAL AIDS RECORDER (DAR) (ARINC 591/ARINC 600) | 31E3610702S1C | CN31.36.107 02 |
| 2910 | 29E2110407C | ELECTROPUMPS ALTERNATE EQUIPMENT - EATON AEROSPACE | 29E2110407S1C | CN29.21.104 07 |
| 2910 | 29E1011012C | HYDRAULIC EDPS ALTERNATE EQUIPMENT - EATON AEROSPACE, PN 3031863-001 | 29E1011012S1C | CN29.10.110 12 |
| 2624 | 26E2411103C | COCKPIT PORTABLE FIRE EXTINGUISHER ALTERNATE EQUIPMENT - TOTAL FEUERSCHUTZ, PN 74-20 | 26E2411103S1C | CN26.24.111 03 |
| 2528 | 25E2810302C | INSTALLATION OF DOUBLESIDED ADHESIVE TAPE FOR CARPET | R25E2810302S1C | CN25.28.103 02 |
| 2520 | 25E2062210C | INSTALLATION OF ENLARGED RACEWAYS | 25E2062210S1C | CN25.20.622 10 |
| 2565 | 25E039C | RELOCATION OF EMERGENCY EQUIPMENT DUE TO VCC REMOVAL | 25E6519258S1C | CN25.65.192 58 |

| | | | | |
|------|---------|--|---------------|----------------|
| 2525 | 25E038C | CHANGE OF PSU-CHANNEL DUE TO DE- INSTALLATION OF RETRACTABLE MONITORS | 25E2511623S1C | CN25.25.116 23 |
| 2520 | 25E037C | RE-INSTALLATION OF ENLARGED RACEWAYS | 25E2062223S1C | CN25.20.622 23 |
| 2521 | 25E036C | IN-SEAT POWER SUPPLY SYSTEM CHANGES | 25E2100300G1C | |
| 2521 | 25E035C | INSTALLATION OF DC POWER (5 V DC/2.1 A) ISPSS FOR PED IN ENTIRE CABIN AREA - ASTRONICS | 25E2101213S1C | CN25.21.012 13 |
| 2565 | 25E034C | COCKPIT FLASHLIGHTS ALTERNATE EQUIPMENT (SFE) - DME CORPORATION, PN P2-07-0015-002 | 25E6500213S1C | CN25.65.002 13 |
| 2523 | 25E033C | ALTERNATE INTERIOR COLOR SCHEME DEFINITION (CHANGE 2) | 25E2350206S1C | CN25.23.502 06 |
| 2520 | 25E032C | NON-INSTALLATION OF ENLARGED RACEWAYS | 25E2062281S1C | CN25.20.622 81 |
| 2565 | 25E031C | EMERGENCY EQUIPMENT CHANGES | 25E6519364S1C | CN25.65.193 64 |
| 2520 | 25E030C | NON-INSTALLATION OF SEAT TRACK FOR DOUBLE SEAT AFT OF FWD LH EMERGENCY EXIT DOOR | 25E2034478S1C | CN25.20.344 78 |
| 2527 | 25E029C | INSTALLATION OF SAFETY PIN STOWAGE POUCH AT DOORS 2 AND 3 (A321) - LANDSCAPE FORMAT | 25E2722206S1C | CN25.27.222 06 |
| 2522 | 25E028C | C/A SEAT LOCATION CHANGE FROM 38.1 TO 38.2 - FWD OF AFT RH EMERGENCY EXIT DOOR | 25E2216813S1C | CN25.22.168 13 |
| 2521 | 25E027C | PASSENGER SEAT MODEL CHANGE | 25E2117701S1C | CN25.21.177 01 |
| 2527 | 25E025C | BABY BASSINET AND BABY BASSINET CARRY CASE PN CHANGE | 25E2723226S1C | CN25.27.232 26 |
| 2565 | 25E024C | PORTABLE ELT SUPPLIER CHANGE FROM TECHTEST LTD TO THALES | 25E6519612S1C | CN25.65.196 12 |
| 2528 | 25E022C | NTF LAYOUT ALLOWING EASY REPLACEMENT | | CN25.28.126 08 |
| 2565 | 25E021C | INSTALLATION OF PORTABLE ELT SURVIVAL TYPE (BFE) - TECHTEST LIMITED | 25E6530551S1C | CN25.65.305 51 |
| 2528 | 25E020C | NTF SELECTION (SFE STANDARD I) - METZELER AIRFLOOR AFR - DA8 | 25E2820051S1C | CN25.28.200 51 |

| | | | | |
|------|-------------|---|---------------|----------------|
| 2565 | 25E019C | INSTALLATION OF FLASHLIGHT IN CABIN (SFE) - DME CORPORATION, PN P2-07-0015-001 | 25E6560003S1C | CN25.65.600 03 |
| 2545 | 25E017C | WORK-TOP/WASH-BASIN ALTERNATE MATERIAL - STAINLESS STEEL/STAINLESS STEEL | 25E4518002S1C | CN25.45.180 02 |
| 2521 | 25E016C | ADDITIONAL SEAT ROW NUM INSIDE OHSC DOOR - LOCATION CHANGED () | 25E2123012S1C | CN25.21.230 12 |
| 2521 | 25E015C | ADDITIONAL SEAT ROW NUM INSIDE OHSC DOOR | 25E2123011S1C | CN25.21.230 11 |
| 2527 | 25E014C | INSTALLATION OF COAT HOOK ON LH WINDSCREEN (SFE) | 25E2729719S1C | CN25.27.297 19 |
| 2565 | 25E013C | INSTALLATION OF SAFETY BELT EXTENSION (BFE) - AMSAFE (PN 2091-2-011-2269) | 25E6563017S1C | CN25.65.630 17 |
| 2527 | 25E012C | INSTALLATION OF TIME TABLE HOLDER (BFE) INNOVINT P/N 1240-01 | 25E2721304S1C | CN25.27.213 04 |
| 2523 | 25E011C | PROTECTION FOR DOOR FRAME NEXT TO TRANSV. GALLEY AFT OF FWD RH PASSENGER/CREW/SERVICE DOOR (31.020) | 25E2311502S1C | CN25.23.115 02 |
| 2510 | 25E009C | INSTALLATION OF STRAPS ON THE FWD LH AND RH DOCUMENT STOWAGE | 25E1011512S1C | CN25.10.115 12 |
| 2526 | 25E008C | INSTALLATION OF CURTAINS | 25E2610001S1C | CN25.26.100 01 |
| 2535 | 25E007C | NON INSTALLATION OF NON-ELECTRICAL GALLEY CATERING/LOOSE EQUIPMENT (BFE) | 25E3513101S1C | CN25.35.131 01 |
| 2535 | 25E006C | INSTALLATION OF NON-ELECTRICAL GALLEY CATERING EQUIPMENT (BFE) | 25E3513102S1C | CN25.35.131 02 |
| 2535 | 25E005C | INSTALLATION OF ELECTRICAL GALLEY CATERING EQUIPMENT (BFE) | 25E3513001S1C | CN25.35.130 01 |
| 2523 | 25E004C | INTERIOR COLOR SCHEME DEFINITION | 25E2350001S1C | CN25.23.500 01 |
| 2550 | 25E003C | CARGO HOLD CONFIGURATION | 25E5000100G2C | |
| 2500 | 25E002C | CABIN EMERGENCY EQUIPMENT | 25E0000100G2C | |
| 2520 | 25E001C | CABIN LAYOUT DEFINITION | 25E2000100G2C | |
| 2370 | 23E7011014C | INSTALLATION OF COCKPIT DOOR SURVEILLANCE SYSTEM (CDSS) CONNECTED | 23E7011014S1C | CN23.70.110 14 |

| | | | | |
|------|-------------|--|---------------|----------------|
| | | TO THE ECAM SD | | |
| 2351 | 23E5113905C | BOOMSETS ALTERNATE EQUIPMENT WITH TWO JACK PLUGS - SENNHEISER, MODEL HME46-K | 23E5113905S1C | CN23.51.139 05 |
| 2312 | 23E1213012C | VHF DATA RADIO (VDR) ALTERNATE EQUIPMENT, CAPABLE VDL MODE 2 - THALES AVIONICS | 23E1213012S1C | CN23.12.130 12 |
| 2336 | 23E013C | ENTERTAINMENT SYSTEM | 23E3600400G1C | |
| 2373 | 23E012C | CAM PN CHANGE | 23E7315909S1C | CN23.73.159 09 |
| 2371 | 23E010C | ACTIVATION OF SSCVR DATALINK RECORDING | 23E7118001S1C | CN23.71.180 01 |
| 2371 | 23E009C | RECORDER INDEPENDENT POWER SUPPLY (RIPS) - 28VDC POWER SUPPLY FOR CVR | 23E7111001S1C | CN23.71.110 01 |
| 2371 | 23E008C | SYSTEM PROVISION FOR CVR CAPABLE OF DATA LINK RECORDING | 23E7112001S1C | CN23.71.120 01 |
| 2373 | 23E007C | CABIN ASSIGNMENT MODULE (CAM) PN CHANGE DUE TO NEW CABIN LAYOUT | 23E7315906S1C | CN23.73.159 06 |
| 2373 | 23E005C | SINGLE DIAL CODE KEYBOARD | 23E7300274S1C | CN23.73.002 74 |
| 2373 | 23E004C | CHANGE FROM HOLMG HANDSET SERIES 89-01 TO HOLMG STANDARD HANDSET SERIES N40A | 23E7300270S1C | CN23.73.002 70 |
| 2311 | 23E003C | INSTALLATION OF SINGLE HF SYSTEM (DATA LINK CAPABLE) - ROCKWELL COLLINS 900 | 23E1111512S1C | CN23.11.115 12 |
| 2373 | 23E002C | CIDS CHANGES | 23E7300100G1C | |
| 2300 | 23E0013239C | AUTOMATIC PROGRAMMABLE ELT WITH PROG. DONGLE WITH REMOTE CONTROL PANEL (RC800) IN COCKPIT-THALES | 23E0013239S1C | CN23.00.132 39 |
| 2270 | 22E002C | FM KITS (REL. 1A - FMGC S7APC13) / MCDU ALTERN. EQUIP - THALES AVIONICS/SMITH ASSOC. WITH CFM ENGINE | 22E7010066S1C | CN22.70.100 66 |
| 2170 | 21E7010907C | INSTALLATION OF OZONE CATALYTIC CONVERTERS ENGELHARDT CORPORATION, PN 20499006 | 21E7010907S1C | CN21.70.109 07 |

| | | | | |
|------|-------------|--|---------------|----------------|
| 2141 | 21E002C | AIR CONDITIONING - COCKPIT AIR HEATING - INTRODUCE FRONT BLOWERS AT FLIGHT CREW FOOT LEVEL | 21E4110002S1C | CN21.41.100 02 |
| 2120 | 21E001C | CABIN AIR RECIRCULATION FILTER CARTRIDGE EQUIPMENT SELECTION - LE BOZEC, PN 424B200-7 | | CN21.20.108 03 |
| 1130 | 11E3011102C | MONOLINGUAL EEPMS EXIT IDENTIFIER - ENGLISH ONLY (VERTICAL ARRANGEMENT) - BRUCE/LSI | 11E3011102S1C | CN11.30.111 02 |
| 1130 | 11E007C | BILINGUAL PASSENGER PLACARDS AND LIGHTED SIGNS - CHANGE 1 | 11E3011055S1C | CN11.30.110 55 |
| 1130 | 11E006C | BILINGUAL CREW PLACARDS | 11E3010601S1C | CN11.30.106 01 |
| 1130 | 11E005C | BILINGUAL PASSENGER PLACARDS AND LIGHTED SIGNS | 11E3011043S1C | CN11.30.11043 |
| 1130 | 11E004C | CHANGE OF EMERGENCY EXIT SIGN | 11E0011913S1C | CN11.00.119 13 |
| 1120 | 11E003C | ENGINE DANGER AREA DECALS (FEET ONLY) - CFMI ENGINES | 11E2010801S1C | CN11.20.108 01 |
| 1100 | 11E002C | OPERATOR PLATE ON FORWARD LH PASSENGER DOOR | 11E0010454S1C | CN11.00.104 54 |
| 1100 | 11E001C | NON INSTALLATION OF THE BASIC OWNER PLATE | 11E0010453S1C | CN11.00.104 53 |
| 1100 | 11E0012404C | INSTALLATION OF LEASING IDENTIFICATION PLATES ON LAVATORY A PARTITION | 11E0012404S1C | CN11.00.124 04 |
| 1100 | 11E0012402C | INSTALLATION OF LEASING IDENTIFICATION PLATES ON ENGINES | 11E0012402S1C | CN11.00.124 02 |
| 0320 | 03E2061101C | A321-211 INCREASED DESIGN WEIGHTS - MTOW TO 93 T, MLW TO 77.8 T, MZFW TO 73.8 T(WV 001) | 03E2061101S1C | CN03.20.611 01 |
| 0320 | 03E001C | A321-211 MULTIPLE OPERATIONAL WEIGHTS CAPABILITY - VARIANTS 001/003 | 03E2015821S3C | CN03.20.158 21 |
| 0210 | 02E1012301C | AIRCRAFT OPERATION ON RUNWAYS LESS THAN 45M WIDE | 02E1012301S1C | CN02.10.123 01 |
| 0210 | 02E1012001C | 15 KNOTS TAILWIND CERTIFICATION AT TAKEOFF | 02E1012001S1C | CN02.10.120 01 |

| | | | | |
|------|-------------|---|---------------|----------------|
| 0210 | 02E1011204C | PARTIAL COMPLIANCE WITH FAA TYPE CERTIFICATION REQUIREMENTS (WITHOUT SEAT ARRANGEMENT REQUIREMENTS) | 02E1011204S1C | CN02.10.112 04 |
| 0210 | 02E1010403C | CERTIFICATION OF DYNAMICALLY TESTED PASSENGER SEATS Y/C | 02E1010403S1C | CN02.10.104 03 |
| 0212 | 02E020C | COMPLIANCE STATUS REPORT WITH EASA REGULATION ON AIR OPERATIONS, PART CAT.IDE.A | 02E1212203S1C | CN02.12.122 03 |
| 0235 | 02E019C | CHANGE TELEDYNE WGL-QAR/DAR HARDWARE AND SOFTWARE INTO SSBFE | 02E3513707S1C | CN02.35.137 07 |
| 0235 | 02E018C | CABIN BFE CHANGED INTO SSBFE | 02E3513590S1C | CN02.35.135 90 |
| 0240 | 02E017C | EXTERNAL LIVERY - AIR LIN - REVISED BELLY FAIRING LETTERING | 02E4011479S1C | CN02.40.114 79 |
| 0240 | 02E016C | EXTERNAL LIVERY FOR SHARKLETS | 02E4011501S1C | CN02.40.115 01 |
| 0235 | 02E015C | Emergency equipment change from BFE to SSBFE - cabin PBE B/E AEROSPACE SYSTEMS, PN E28180-20-0001 | 02E3514418S1C | CN02.35.144 18 |
| 0235 | 02E013C | EMERGENCY EQUIPMENT CHANGE FROM BFE TO SSBFE - THALES PORTABLE ELT AND CARRY OFF BAG | 02E3514404S1C | CN02.35.144 04 |
| 0235 | 02E012C | AVIONICS/COCKPIT - CHANGE ROCKWELL COLLINS AOC FROM BFE TO SSBFE (WITH UNITS IN KG BY DEFAULT) | 02E3513093S1C | CN02.35.130 93 |
| 0235 | 02E010C | EMERGENCY EQUIPMENT CHANGE FROM BFE TO SSBFE - PORTABLE ELT P/N 500-12Y | 02E3514408S1C | CN02.35.144 08 |
| 0240 | 02E009C | REVISED EXTERNAL LIVERY - BORDER STRIPE ADDED AROUND GERMAN FLAG | 02E4010752S1C | CN02.40.107 52 |
| 0235 | 02E008C | CABIN EQUIPMENT - CHANGE BFE INTO SSBFE | 02E3513595S1C | CN02.35.135 95 |
| 0235 | 02E007C | CHANGE OF GALLEY CATERING EQUIPMENT FROM SSFBE TO BFE | 02E3514101S1C | CN02.35.141 01 |
| 0235 | 02E006C | AVIONICS/COCKPIT - CHANGE BFE INTO SELLER SUPPLIED BFE (SSBFE) (*C) | 02E3513080S1C | CN02.35.130 80 |
| 0212 | 02E005C | COMPLIANCE STATUS WITH JAR 26 | 02E1212017S1C | CN02.12.120 17 |

| | | | | |
|------|---------|---|---------------|----------------|
| 0240 | 02E004C | APRON FAIRING AND TRAVEL AREA PAINTED IN RED RAL 3020 | 02E4014606S1C | CN02.40.146 06 |
| 0240 | 02E003C | EXTERNAL LIVERY | 02E4010101S1C | CN02.40.101 01 |
| 0210 | 02E001C | 15 KNOTS \ TAILWIND CERTIFICATION AT LANDING | 02E1012002S1C | CN02.10.120 02 |



BFE/SSBFE List

| ATA | Part number | Title | Manufacturer | Qty. |
|-------------|-----------------|--|---|------|
| 25.65.00.10 | 2226-2-011-8005 | Safety belt, extension | AMSAFE AVIATION | 2 |
| 25.28.20.00 | 4541-091012-9BH | Carpet | ANKER | 148 |
| 25.21.00.00 | 1294-2-2 | ISPSS - Indicator Light | ASTRONICS ADVANCED ELECTRONIC SYSTEMS | 72 |
| 25.21.00.00 | 1325-1 | ISPS Box USB | ASTRONICS ADVANCED ELECTRONIC SYSTEMS | 72 |
| 25.21.00.00 | 132582-060708 | Cable Outlet Unit - ISPS | ASTRONICS ADVANCED ELECTRONIC SYSTEMS | 4 |
| 25.21.00.00 | 1327-1-5 | Outlet Unit - USB | ASTRONICS ADVANCED ELECTRONIC SYSTEMS | 280 |
| 25.21.00.00 | A1-0607101013 | C/B, USB PS - 4 OU & 1 IUL (LH Triple seats) | ASTRONICS ADVANCED ELECTRONIC SYSTEMS | 34 |
| 25.21.00.00 | A1-1010060713 | C/B, USB PS - 4 OU & 1 IUL (RH Triple seats) | ASTRONICS ADVANCED ELECTRONIC SYSTEMS | 34 |
| 25.34.30.00 | 267-500 | 7000 BTU/H air chiller | B/E AEROSPACE ANAHEIM | 1 |
| 25.34.30.00 | 374-9 | Air chiller, 4000 BTU/H | B/E AEROSPACE ANAHEIM | 1 |
| 25.35.20.00 | 3530-0305-01 | Serving pot (coffee) | B/E AEROSPACE BEVERAGE MAKER PROD.LENEXA | 4 |
| 25.35.30.00 | 416-0201-27 | Beverage maker rail | B/E AEROSPACE BEVERAGE MAKER PROD.LENEXA | 4 |
| 25.35.10.00 | 4510-48LG-00 | Beverage maker | B/E AEROSPACE BEVERAGE MAKER PROD.LENEXA | 4 |
| 35.32.10.00 | E28180-20-0001 | Protective Breathing Equipment (PBE) | B/E AEROSPACE SYSTEMS GMBH | 5 |
| 25.30.00.00 | 1391000 | Galley G1 | BUCHER | 1 |
| 25.30.00.00 | 1392000-100 | Galley G2 | BUCHER | 1 |
| 25.30.00.00 | 1395000-100 | Galley G5 | BUCHER | 1 |
| 25.27.60.00 | 1397000 | Stowage S1 | BUCHER | 1 |
| 25.66.00.00 | P01074-101 | Life vest, passenger | EASTERN AERO MARINE | 217 |
| 25.66.00.00 | P01074-109C | Life vest, cockpit/cabin crew | EASTERN AERO MARINE | 11 |
| 25.66.00.00 | P01074-109D | Life vest, demo | EASTERN AERO MARINE | 2 |
| 25.66.00.00 | P0640-103 | Life vest, infant | EASTERN AERO MARINE | 20 |
| 25.27.10.00 | 1240-01 | Timetable Holder | INNOVINT AIRCRAFT INTERIOR GMBH | 4 |
| 25.27.10.00 | 1250-61 | Folding worktop | INNOVINT AIRCRAFT INTERIOR GMBH | 1 |

| ATA | Part number | Title | Manufacturer | Qty. |
|-------------|------------------|--|---------------------------------|------|
| 25.60.10.00 | 6240-37 | First aid kit | INNOVINT AIRCRAFT INTERIOR GMBH | 1 |
| 25.27.10.00 | 7250-32C | Baby bassinet Color Nachtblau | INNOVINT AIRCRAFT INTERIOR GMBH | 2 |
| 25.27.10.00 | 7260-08 | Baby bassinet cover Color NACHTBLAU | INNOVINT AIRCRAFT INTERIOR GMBH | 2 |
| 25.26.50.20 | FF03852139LS720 | curtains | LANTAL TEXTILES | 15 |
| 25.21.41.00 | 3520D955-21-311 | DBL LH, NARROW, NARROW BACKREST, NO COAT HOOK, TABLE LATCH | RECARO | 2 |
| 25.21.41.00 | 3520D955-22-311 | DBL RH, NARROW, NARROW BACKREST, NO COAT HOOK, TABLE LATCH | RECARO | 2 |
| 25.21.41.00 | 3520D955-31-311 | TPLLH, STD | RECARO | 26 |
| 25.21.41.00 | 3520D955-31-341 | TPL LH. NARROW, TRANSITION, ROW BACKREST CTR | RECARO | 1 |
| 25.21.41.00 | 3520D955-31-361 | TPL LH, STD, TRANSITION ROW O/B | RECARO | 2 |
| 25.21.41.00 | 3520D955-31-391 | TPL LH, STRETCHER, SPECIAL SEATLEG 17" | RECARO | 2 |
| 25.21.41.00 | 3520D955-31-511 | TPL, LH, IAT | RECARO | 3 |
| 25.21.41.00 | 3520D955-32-311 | TPL RH, STD | RECARO | 26 |
| 25.21.41.00 | 3520D955-32-361 | TPL RH, STD, TRANSITION ROW O/B | RECARO | 2 |
| 25.21.41.00 | 3520D955-32-371 | TPL RH, STRETCHER, SPECIAL SEATLEG 17", SHORT BAGGAGE BAR | RECARO | 1 |
| 25.21.41.00 | 3520D955-32-381 | TPL RH, NARROW, TRANSITION ROW BACKREST CTR | RECARO | 1 |
| 25.21.41.00 | 3520D955-32-391 | TPL RH, STRETCHER, SPECIAL SEATLEG 17" | RECARO | 1 |
| 25.21.41.00 | 3520D955-32-511 | TPL RH, IAT | RECARO | 3 |
| 46.21.04.00 | 222-6279-232-RVA | AOC application software diskette for ATSU | ROCKWELL COLLINS | 1 |
| 46.21.04.00 | 222-7720-001-RVB | AOC database diskette for ATSU | ROCKWELL COLLINS | 1 |
| 23.11.33.20 | 822-0987-003 | HFDR antenna coupler | ROCKWELL COLLINS | 1 |
| 23.11.33.00 | 822-0990-003 | HFDR transceiver | ROCKWELL COLLINS | 1 |
| 25.35.10.00 | 8203-11-0000-01 | Oven | SELL GMBH | 4 |
| 31.36.52.00 | 2234507-1 | WGL-DAR/QAR software | TELEDYNE | 1 |
| 31.36.52.00 | 2234641-008 | Recording media CF disk | TELEDYNE | 1 |

| ATA | Part number | Title | Manufacturer | Qty. |
|-------------|-------------|--|--------------------|------|
| 31.36.52.00 | 2243800-362 | WGL-DAR/QAR (2 modules) HSPA + | TELEDYNE | 1 |
| 25.60.10.13 | S1820511-01 | Emergency Locator (ELT) bracket Transmitter | THALES AVIONICS SA | 1 |
| 25.60.10.13 | S1820511-03 | ELT Carry off bag | THALES AVIONICS SA | 1 |
| 25.60.10.12 | S1820513-15 | Remote control panel | THALES AVIONICS SA | 1 |
| 25.60.10.14 | S1820514-04 | Programming dongle ATP (fix) | THALES AVIONICS SA | 1 |
| 25.60.10.13 | S1821502-02 | Emergency Locator (ELT) Transmitter | THALES AVIONICS SA | 1 |
| 25.60.10.13 | S1823502-03 | Portable Emergency Transmitter (ELT) | THALES AVIONICS SA | 1 |